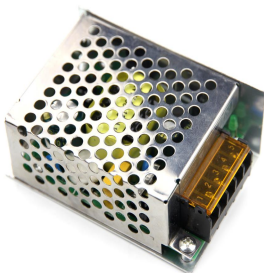


■ Applications

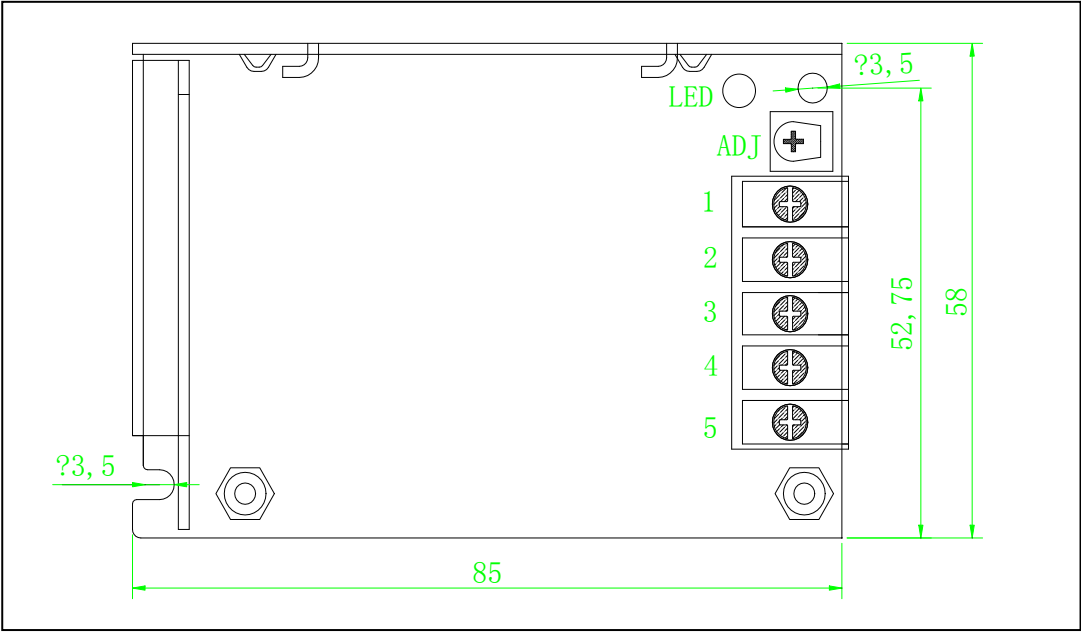
- Industrial controlsystem
- Industrial automation machinery
- Mechanical and electrical equipment
- Electronic instruments, equipments or apparatus
- LED Lighting Series

- International broad voltage AC input
- Protection: short-circuit, overload,overheat
- 100% full-load aged
- 300VAC surge for 5 seconds withstandable
- Working temperature up to 60℃
- 5G vibration tested
- High efficiency, long life span, and high reliability
- 3 years warranty



Product No.		NW-25-3.3	NW-25-5	NW-25-12	NW-25-15	NW-25-24	NW-25-48
Output	DC voltage	3.3V	5V	12V	15V	24V	48V
	Rated Current	5A	5A	2.1A	1.67A	1A	0.5A
	Current Range	0-5A	0-5A	0-2.1A	0-1.67A	0-1A	0-0.5A
	Rated Power	16.5W	25W	25W	25W	24W	24W
	Ripple and Noise(Max)Note.2	100mVp-p	100mVp-p	150mVp-p	180mVp-p	240mVp-p	250mVp-p
	Voltage adjustment	2.9-3.3v	4.8-5.4V	10.8-13.2V	13.5-16.5V	22-27.6V	44-52V
	Voltage Accuracy Note3	±3%	±2%	±1%	±1%	±1%	±1%
	Linear Adjustment Note4	±0.5%	±0.5%	±0.5%	±0.5%	±0.5%	±0.5%
	Load Adjustment Note5	±2%	1.50%	±0.5%	±0.5%	±0.5%	±0.5%
	Start and rise time	1000ms,30ms/230VAC 1000ms,30ms/110V					
	Hold time (Typ)	50ms/230VAC 10ms/115AC					
Input	Voltage range	90-264VAC/120-370VDC					
	Frequency range	47-63HZ					
	Efficiency (Typ)	70%	75%	80%	81%	82%	82%
	AC current (Typ)	0.57A/90V 0.37A/220V					
	Surge current (Typ)	Cold Start: 65A/230VAC					
	Current leak	<2mA/240VAC					
Protection	Overload	Larger than 105% of capacity					
		restoration after abnormity removed					
	Overvoltage						
		Protection type: Turn off the output voltage and resume after restart					
	Overheat						
Environment	Working temp.	-20~+60℃(Refer to the tenuation curve)					
	Working humidity	20~90% RH, without condense					
	Storage temp & hmdty	-40~+80℃					
	Temp. coefficient	±0.03%/℃ (0~50℃)					
	Vibration proof	10~500HZ,5G 10min / cycle, X、Y、Z axes 60 min each					
Safety reg. & EMC (Note.6)	Safety regulation	GB195110.1-2004/IEC61347-1:2003 CE(EMC+LVD)					
	Voltage proof	I/P-O:1.5KVAC I/P-FG:1.5KVAC O/P-FG:0.5KVAC					
	insulation resistance	I/P-O/P, I/P-FG,O/P-FG:100M Ohms/500VDC/25℃/70% RH					
	EMC irradiation	EN 55022A:2006;EN61000-3-2:1995+A2:2005					
	EMC disturbance proof	EN 61000-3-2:2006;					
	Dimensions	85*58*34mm(L*W*H)					
	Packing	0.14kg/PCS;100PCS/15.3kg					
Notes:	1. Unless specially indicated, all data are taken under 230VAC input, rated load and 25℃ environment temp. 2.Ripple and noise: measured with a 12" double ripple cord connected in parallel with a 0.1μF and a 47 μF capacitor on 20MHz bandwidth. 3.Accuracy: including preset errors, linear adjustment rate and load adjustment rate. 4.Linear adjustment: taken under rated load from low voltage to high voltage. 5.Load adjustment: taken under 0~100% of rated load. 6. Power supply is taken as part of the whole system, and needs to be confirmed with terminal instruments for EMC.						

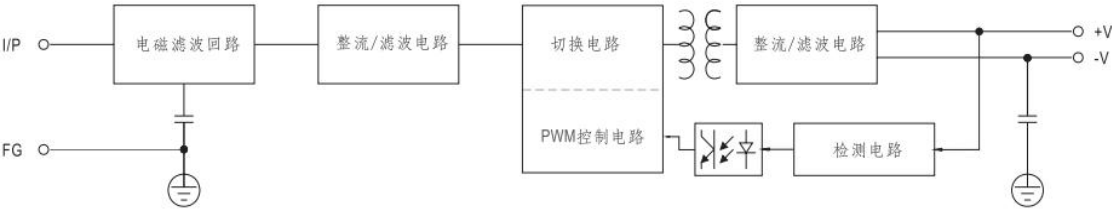
■ Appearance



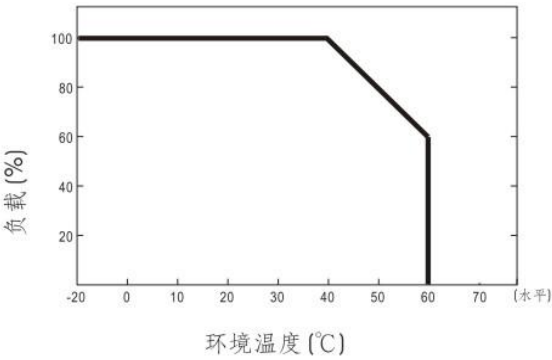
Terminal foot definition

Foot No.	Foot function
1	OUTPUT +
2	OUTPUT -
3	FG
4	AC/N
5	AC/L

■ Frame diagram



■ Tenuation curve



■ Static property curve

